

Cleveland Type Foundry

Gegründet 1875. 1892 Zusammenschluß mit anderen Schriftgießereien zur *American Type Founders Company*. Auch als *H. H. Thorpe Mfg Co* tätig

Acadian	1882	Henry Schuenemann
Acadian No. 3	vor 1886	
Acadian No. 4	vor 1886	
Alpine	ca. 1880	Henry Schuenemann
Argent	ca. 1886	
Armoric	ca. 1882	
Astral No. 2	vor 1887	
Carpenter Script	1878	James West
Chameleon	vor 1886	
Chic	1888	Henry Schuenemann
Chinese	1883	H. H. Thorp
Cirrous	vor 1885	
Cleveland Script	vor 1896	James West
Elberon	ca. 1886	
Euclid	vor 1891	Henry Schuenemann
Gazelle		Henry Schuenemann
Hoyt Script	vor 1887 y	James West
Illyrian	vor 1887	Henry Schuenemann
Interlaken	vor 1895	
Ivanhoe Series	vor 1894	Henry Schuenemann ,
Ivy Series		
Litho Specimen		
Mikado	vor 1887	Henry Schuenemann

Oxford	1888	Henry Schuenemann
Oxford No. 2	1888	Henry Schuenemann
Oxford No. 3	1888	Henry Schuenemann
Raven		
Rembrandt	vor 1896	
Signet	ca. 1883	
Signet Shade	vor 1885	
Tablet	vor 1885	
Walton Series	ca. 1885	Henry Schuenemann
Waverly Circular	vor 1895	Henry Schuenemann

Literatur:

Annenberg, Maurice: *Type Foundries of America and their Catalogs*, New Castle 1994

ASTRAL No. 2

ORIGINATED BY CLEVELAND TYPE FOUNDRY, CLEVELAND, O.

36 POINT

4A 6a \$9 15

Solid Gold Medals 2
ROUGH JOKER

24 POINT

6A 10a \$8 95

Texas First National Bank 94
NEW SILVER COIN

18 POINT

8A 14a \$5 65

12 POINT

10A 18a \$4 30

German Warriors
89 RIFLES

National Fireside Stories
LITERATURE \$589

REMBRANDT SERIES

ORIGINATED BY CLEVELAND TYPE FOUNDRY, CLEVELAND, O.

36 POINT

5A \$2 85

THE DISCOVERY OF AMERICA
HONEST COLUMBUS

24 POINT

7A \$2 15

18 POINT

10A \$2 00

MUSIC HALL
CHARITY CONCERT
THE CLUB

BRANT ROCKS
SALT SEA WEED TONIC
STAR FISH

a a b c d e e f g h i i j k l t m m n n
 o o p q r r s s t t u u u u v v x y y z z
 the st e \$ 1 2 3 4 5 6 7 8 9 0 1 2 3 4 5 6 7 8 9 0
 A B C D E F G H I J K L M
 N O P Q R S T U V W X Y Z &

Carpenter Script



8A. 16r. SEVEN-LINE EXCEPTOR CHAMBERLON. Quads and Spaces, 35c. \$5.80

Waltz Once More
Ancient House in the Rocks
12 Quickly 80

9A. 12r. FIVE-LINE NONPARRELL CHAMBERLON. Quads and Spaces, 50c. \$6.75

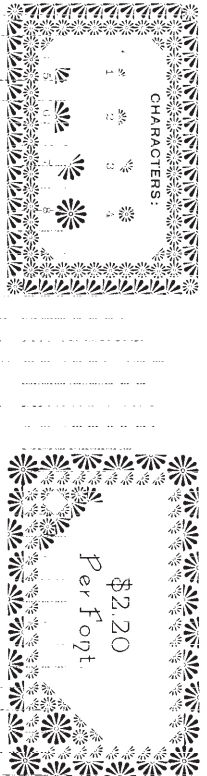
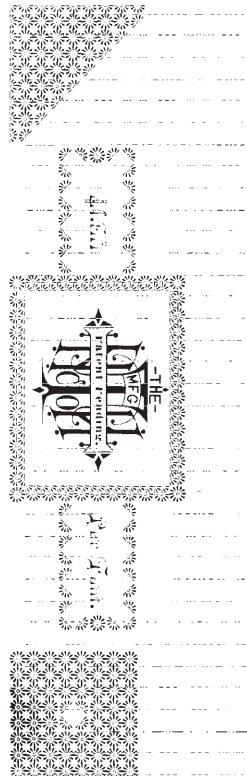
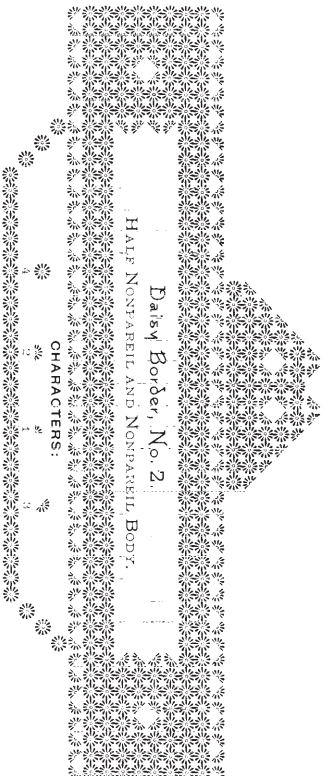
Grow & Robin
American Bard Butter
23 Time 45

4A. 8r. SEVEN-LINE NONPARRELL CHAMBERLON. Quads and Spaces, 60c. \$8.30

Majestically
Beautiful Chromos
5 Flow 8

SPECIMEN BOOKS OF NEW DESIGNS FURNISHED UPON APPLICATION.

Cleveland Type Foundry,
Cleveland, Ohio.



SPECIMEN BOOKS OF NEW DESIGNS FURNISHED UPON APPLICATION.

THE CHIC SERIES

ORIGINATED BY CLEVELAND TYPE FOUNDRY, CLEVELAND, O.

24 POINT

8 A 16 a \$4 35

18 POINT

10 A 20 a \$3 80

The Best Equipped * *
* Type Foundry in the
United States of America.
When in need of Type or
Printing Material visit us. *

Mr. and Mrs. Henry Copperfield
Request your Presence
at the Marriage of their Daughter
Rosina Yokes, to
George Everton Fearnought,
Tuesday Evening, January 27th.

LITHO SPECIMEN

ORIGINATED BY CLEVELAND TYPE FOUNDRY, CLEVELAND, O.

18 POINT

8 A 16 a \$3 15

32 A 112 a \$16 75

When Penn appeared to receive his charter he came into the royal
presence in his usual easy manner, with his hat on and his hands in his
pockets. Charles at once removed his own hat. Keep your hat on,
young man, said Penn, keep your hat on, and people wont know you
are bald. It is the custom of this place, replied the king, for only one
person at a time to remain covered. \$1,234,567.90

h^o m^o n^o

These Letters are Mortised, not Kerned

r^o v^o w^o

THE IVY SERIES

PATENTED

ORIGINATED BY CLEVELAND TYPE FOUNDRY, CLEVELAND, O.

12 POINT

10 A 52 a \$4 40

12 POINT NO 2

10 A 52 a \$4 40

He skimmed the case at a lively
pace, and ever anon his look surveys
with the fire of keen desire, the copy=
burdened hook. And swift and sly
that wary eye, each comrade's copy
scanned, for it was no sin the "ad." to
win by the speed of a good right hand

Proved 23456 Snare

Advertising seems to be an art yet to
be discovered by some people. That
is, the practical part of it. A constant
stream of water from one or more fire
engines will soon extinguish very large
fires, while buckets of water, dashed on
here and there, will have no effect.

Printing 203,456 Material

CIRROUS SERIES

ORIGINATED BY CLEVELAND TYPE FOUNDRY, CLEVELAND, O.

36 POINT

4 A 8 a \$6 10

Modern Styles 489 Useful Faces
Beautiful Borders

24 POINT

6 A 12 a \$4 95

American 25 Laborers
Known Power

18 POINT

6 A 16 a \$4 10

Delightful and Joyous Outing
Lake Erie Excursion 63

WALTON SERIES

ORIGINATED BY CLEVELAND TYPE FOUNDRY, CLEVELAND, O.

36 POINT

4 A 8 a \$4 15

The United States Soldiers and Sailors 654
AMERICAN REVOLUTION

30 POINT

5 A 10 a \$3 65

First Quarterly Report of the Supreme Treasurer 654
KNIGHTS OF THE ORIENT

24 POINT

6 A 12 a \$3 15

VERY ORIGINAL
Engravings and Designs of
352 England Artists

18 POINT

6 A 16 a \$2 85

PLAIN QUESTION ASKED
Does every man understand
his own business best
\$125,894,763



10A, 18a.

Pica Tablet.

\$2.25

TRUWELL, PLUMB & CO.

Decorators of Honorable Tablets of Worth
Defenders of Defenceless Virtue

\$2,356,891.00

5A, 18a.

Great Printer Tablet.

\$4.80

UNIQUE LETTER

Square, Substantial, Strong

Useful and Striking

\$167,930.69

6A, 12a.

Double Pica Tablet.

\$6.25

PERSERVERE

The Great Sure Thing
Signet of Success

13567890

Cleveland Type Foundry,
Cleveland, Ohio.



8A, 16a.
Quads and Spaces, 38c.

Three-Line Nonpareil Galleys.

\$4.10

TYPE OF EVOLUTION

Ring-Tailed Roman, Designed to Hold Fast

1234567890

6A, 12a.

Two-Line Pica Galleys.

\$4.95

ADMONITIONS

General Information for Learners

1234567890

4A, 8a.
Quads and Spaces, 50c.

Three-Line Pica Galleys.

\$6.10

GROTESQUE

And Curiously Graceful

1234567

EUCLID SERIES

ORIGINATED BY CLEVELAND TYPE FOUNDRY, CLEVELAND, O.

48 POINT with 72 Point Initials

3A 3A 5a \$16 80

Bashful Radiant
45 KINGS 23

36 POINT with 60 Point Initials

3A 4A 6a \$13 30

Daily Brooklyn Journal
12 BURNS 30

30 POINT with 48 Point Initials

3A 5A 8a \$11 30

Concert Season Now Opens
7 BALL PARKS 2

24 POINT with 36 Point Initials

3A 6A 10a \$7 60

Want Arming
CHICAGO
23 Heroine 46

18 POINT with 30 Point Initials

3A 8A 14a \$6 75

Printer's Supplement
BALTIMORE
10 New Designs 28

12 POINT with 24 Point Initials

4A 10A 18a \$4 75

Wagons Buggies Carriages
HANDSOME RIBBONS
3 Sleepy Printers Yawning 5

10 POINT with 18 Point Initials

4A 10A 18a \$3 85

Dispatches Quickly Forwarded
HUNGRY MECHANICS
123 Type, Presses, Cases 456

Elberon  Series.

10A, 18a.

12 POINT ELBERON, No. 2.

\$3.90

HUMAN PASSIONS ARE QUICK TO RISE AND FALL

Many Men of Different Hues but to Keep Feet Warm Wear big Shoes

Often in the Still of Night the Cry of Fire is Heard

12345 Beautiful Shadows of this Grand Old Forest City 67890

8A, 14a.

18 POINT ELBERON, No. 2.

\$3.25

BETRAYED BY A HAIR ON HIS COAT

A Violet from Mother's Grave Cherished with Care

12345 Their Perpendicular Elevation 67890

6A, 10a.

24 POINT ELBERON, No. 2.

\$4.50

COMPARISONS ARE ODIOUS

A Paradise of Fools Belongs to Milton

123 Knowledge is Power 678

4A, 6a.

36 POINT ELBERON, No. 2.

\$5.50

WIT AND WISDOM

A Base Ball Player's Luck

23 Political Frauds 56

12 point Pica, 18 point 3-Line Nonpareil, 24 point Double Pica, 36 point 3-Line Pica.

Cleveland Type Foundry, Cleveland, Ohio.

Hoyt  Script.

4A, 18a.

30 POINT HOYT SCRIPT.

\$8.85
Card Fonts, 3A, 8a, 4.75

The following is what the Iowa Press Association made of Hon. George's note declining the invitation to meet with them the following June:

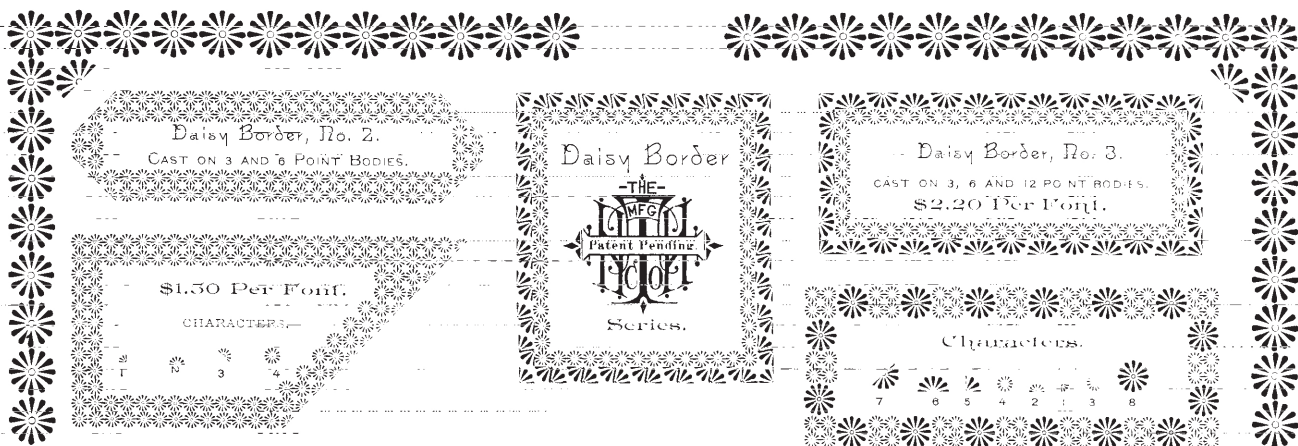
"I have wondered all along whether any squint had denied the scandal of the President meeting June in the woods on Saturday. I have homing, cannot, and R. R. time more than I can move with right steam. If rails are blighted, dig them early. Any insinuation that brick ovens are dangerous to human eyes are the honors."

Yours Truly,

Hon. George

Cleveland Type Foundry,

Cleveland, Ohio,



Illyrian  Series.

10A, 20a.	10 POINT ILLYRIAN	\$1.85	8A, 16a.	12 POINT ILLYRIAN.	\$2.00
	20a Lower Case, (extra)	0.95		16a Lower Case, (extra)	1.00

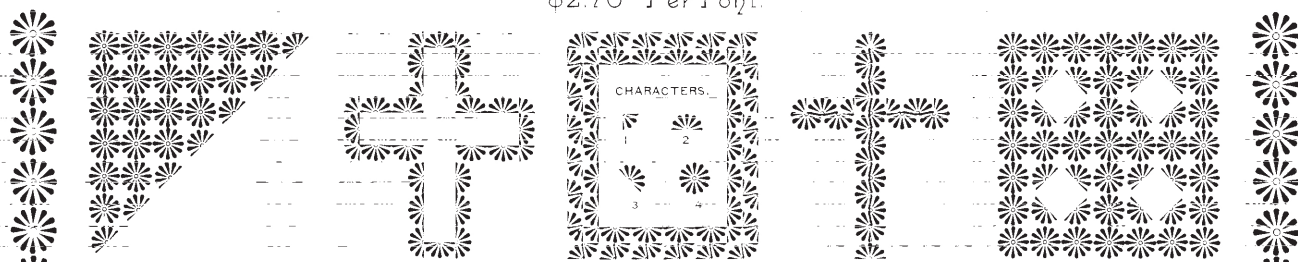
They were Lovers and Pain would Wed and The Evening Star its Vesper Lamp
 on his Breast she had Nestled her Head, he Glanced Above the West had Lit,
 Down and Painted her Cheeks they had The Dusky Curtains of the Night
 Colored his only Clean Shirt Bosom Light Red. Were following near it.

6A, 14a.	18 POINT ILLYRIAN.	\$2.80
	14a Lower Case, (extra)	1.30

The Ball and Bat are Put Away, Ceased is the Long Strife,
 And now the Festive Umpire May Obtain Insurance on his Life Courier
 Peculiarities of Noted People in Years Gone Bye

12 Point Daisy Border.

CAST ON 6 AND 12 POINT BODIES.
 \$2.70 Per Font.



\$3.15
 Per Font.

18 Point Daisy Border.

Cast on 9 and 18 Point Bodies.



Cleveland Type Foundry,

147 St. Clair Street.

December 1886 147

IVANHOE SERIES.

12A, \$1.20. 12a, \$1.20. 8 POINT IVANHOE. Complete Font, \$2.40. 10A, \$1.15. 10a, \$1.20. 10 POINT IVANHOE. Complete Font, \$2.35.

LAUGH AND THE WORLD SNICKERS WITH THEE, MY BARK, I'LL
With You, But Weep and You Will Weep Quite Alone Swiftly Go Athwart the Foaming Brine, Nor
When Glad Your Friends Will Be Many Care What Land Thou Bearest
\$123456 Be Sad and You Will Lose 67890 \$3245 Me to, So Not to Mine 16789

10A, \$1.20. 16a, \$1.20. 12 POINT IVANHOE. Complete Font, \$2.40. 8A, \$1.50. 14a, \$1.55. 16 POINT IVANHOE. Complete Font, \$3.05.

EVERY ONE OF THE SUNSHINE HE IS A PLAIN HONEST
Friends Who Stuck to Him While His Man in the Parliament of Man
Ducats Lasted, Alas! Have The Federation of the
\$12345 Faded and Gone 167980 \$12345 World! 567890

8A, \$2.00. 12a, \$1.75. 18 POINT IVANHOE. Complete Font, \$3.75.

THE MORNING WATCH WAS COME
The Vessel Lay Her Course and Gently Made Her Way
67889 The Cloven Billows Flashed 12345

6A, \$2.35. 10a, \$2.40. 24 POINT IVANHOE. Complete Font, \$2.75.

FRIENDS ARE MANY, BE SAD
\$12356 And You Lose Them 67890

4A, \$1.00. 6a, \$2.35. 30 POINT IVANHOE. Complete Font, \$3.35.

BUT ALONE YOU MUST
\$1234 Drink Life's Gall 67890

4A, \$1.35. 6a, \$1.20. 36 POINT IVANHOE. Complete Font, \$3.55.

IN THE HALLS OF
\$1234 Gaily Sing 5688

CAST BY CLEVELAND TYPE FOUNDRY, CLEVELAND, OHIO.
For Sale by all Foundries and Branches of the American Typefounders' Company.

MIKADO SERIES

ORIGINATED BY CLEVELAND TYPE FOUNDRY, CLEVELAND, O.

48 POINT with Initials

3A 3A 6a \$12 50

When Robbers Plunder
* in * Broad * Daylight *
Then a robin I will Be

36 POINT with Initials

4A 4A 8a \$10 65

Should Gambling be Allowed in Church
No "Gold" Hands" Shown

24 POINT with Initials

6A 6A 12a \$8 85



* * * His Majesty is Warm
Hearted * This Type is * * *
* Commended * by * Nibsy

18 POINT with Initials

6A 6A 12a \$6 70

Many Were Cold, But Few Were Frozen.
Wasp came buzzing to his work, *
* and various things did tackle.
He stung a boy, then made the



OXFORD, No. 2

ORIGINATED BY CLEVELAND TYPE FOUNDRY, CLEVELAND, O.

36 POINT

3 A 6 A \$6 95

DEW GEMS GLISTEN
UNION LODGE

24 POINT

3 A 8 A \$4 55

GRACELAND ARTIST SCHOOL
EUROPE NOTED

18 POINT

4 A 10 A \$4 20

THE LIFE BOAT
RESCUES 569

12 POINT

5 A 12 A \$2 40

FIFTH ANNUAL BANQUET
MEXICAN 47 RANGER

OXFORD, No. 3

ORIGINATED BY CLEVELAND TYPE FOUNDRY, CLEVELAND, O.

36 POINT

6 A \$3 75

DARTMOUTH 86 CLASS

24 POINT

8 A \$2 95

VIRGINIA GRAND ARMY BAND
COMPRISE 78 PIECES

18 POINT

10 A \$2 60

BANK OF ENGLAND
\$32,975,146

12 POINT

12 A \$1 35

PRESIDENT OR SECRETARY
1234567890

WAVERLY CIRCULAR

ORIGINATED BY CLEVELAND TYPE FOUNDRY, CLEVELAND, O.

12 POINT

30 A 140 a #14 25

PERFORMANCE GENUINE

\$1234567890

Electricians have discovered that the human brain when at work evolves enough heat to drive an electric motor, through the invention of a thermopile. One of these days editors will be given free passes on railroads on condition that they wear thermopiles in their hats, think hard, and furnish power to run the locomotive.

He skimmed the case at a lively pace, and ever anon his look surveyed with the fire of keen desire the copy-burdened hook. And swift and sly his wary eye each comrade's copy scanned. For

8 POINT

40 A 160 a #10 85

A REMARKABLE SNAKE STORY

\$1234567890

A family in San Luis Potosi possessed a very fine rattlesnake. They captured it by means of a forked stick when it was a baby, and had succeeded in domesticating it. In the course of years it grew to be fourteen feet long, and was much attached to its master, and would follow him about the house like a dog. During the recent Storm in San Luis Many Palatial Residences were Violently Attacked Sadly Demoralized by Lightning His Snakeship Nobly Determined to Die for his Benefactor, Therefore he became a Lightning-rod.

10 POINT

36 A 150 a #13 85

HOW HE LOVED HIS YOUNGER BROTHER

Inter-Colonial. \$235,687 Excursionists

"Mabel," said Henry, in spite of his effort to control himself his voice was tremulous, and he spoke with the air of timid desperation which marks the elocution of a man about to ask for the loan of \$5. "Mabel, I do not kneel at your feet to plead for myself, I come here only to beg you to think of my younger brother, George. He--he loves you Mabel, and should you refuse his plea, I tremble for the consequences. He wants a Sister-in-law, one who will be a true sister to him. Will you not be one to him? We go to press too early to give her answer.